

Kilmun and Strone update

We have recently issued out over 1600 postcards to let the communities know about the main phase of the sewer projects starting. We have issued more than normal to try and ensure we capture more of the transient population to help make them aware of the projects. We have also issued letters to the houses that are in close proximity of the works.

We have issued to 905 properties in Rhu area and also 718 properties in the Kilmun ,Strone, Blairmore up to Ardentinny area

The postcard includes the Website <http://www.scottishwater.co.uk/firhofclyde> this is being regularly updated with the latest information.

Kilmun

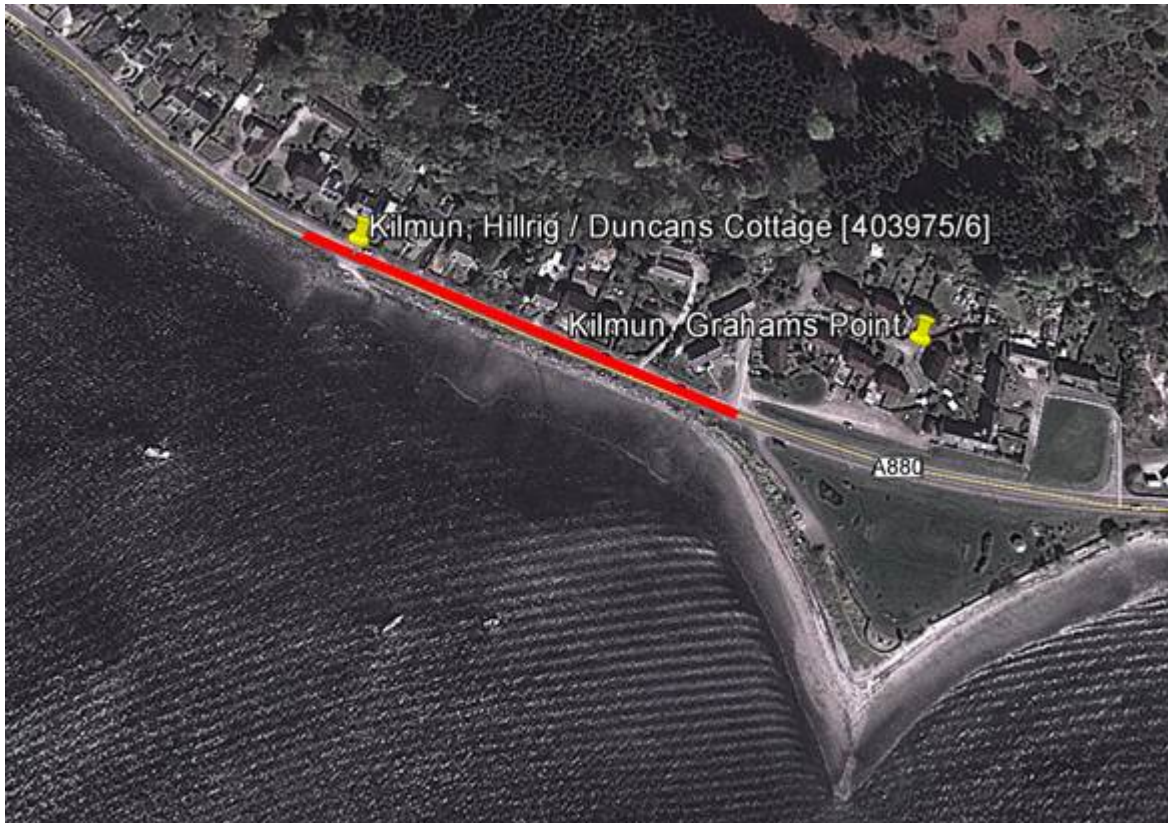
Our main work in Kilmun is planned to start 9th October 2017. The work in Kilmun will be phased over 10 months.

The service diversion works by BT Openreach and Scottish & Southern Energy (SSE) that are required prior to our main phase of construction works have been completed over the summer of 2017.

We have designed the new infrastructure to ensure that all work can be done under single lane closures meaning all routes will remain open and no full road closures are required. We have been working in collaboration with Argyll and Bute Highways to help reduce the impact of the works on the community.

Some of the work will be carried out in the road. For us to work safely we require to have temporary traffic lights on the Shore Road. Please follow all traffic signs put in place.

The images below shows the area of first phase of works (represented by the red line).



Rhu

Our main work in Rhu is planned to start in w/c 9th October. The work will be phased over 9 months.

Service diversion works are required prior to our main phase of construction. Scottish Power Energy Networks (SPEN) have completed the power diversion and Scottish Gas Networks(SGN) are to finish their diversion work by the first week of October.

We plan to construct underground tanks and associated pipework in two locations in Rhu:

Torwoodhill Road

starting on 9th October on the A814 between Torwoodhill and the HMNB Clyde off Site and Media Centre for approximately 5 months.

- Septic tank in bus stop layby
- New sewer laid in the road

Artarman Road/ Armadale Road

The second phase will be starting in March 2018 on the A814 between Armadale Road and Rhu Marina for approximately 4 months

- Septic tank in green space at the entrance to the Marina.

- New sewer laid in the Gareloch Road (A814) from Junction with Armadale Road to Artarman Road
- We have designed the new infrastructure to ensure that all work can be done under single lane closures meaning all routes will remain open and no full road closures are required. We have been working in collaboration with Argyll and Bute Highways to help reduce the impact of the works on the community.
- Some of the work will be carried out in the road. For us to work safely we require to have temporary traffic lights on A814 Gareloch Road. Please follow all traffic signs put in place
- The traffic lights will be under manual control at peak traffic flow times to reduce the impact of the peak MoD traffic (between 7-930am, 4:30-6 pm, Mon-Thurs and Friday 7am-1pm).
- Please note full pedestrian access will be maintained. The water supply and drainage services from your kitchen and bathroom should not be affected by our work.

Our Alliance Partner amey Black & Veatch (aBV) will carry out the work on our behalf.

The image below shows the area of works (represented by the red rectangle). Please note that this is just approximate.



above: area of works at Torwoodhill Road



above: area of works at Artarman/Armadale Road